

NORTHLAND CONSERVATION NEWS

WINTER 2011 NEWSLETTER

SWCD SUPERVISORS: CHAIRMAN SCOTT KLEIN, VICE CHAIRMAN GREG PETERSON, SECRETARY JUSTIN DAGEN, TREASURER JOE WILEBSKI, AND PUBLIC RELATIONS RON ANDERSON

SWCD STAFF: DARREN CARLSON - DISTRICT MANAGER; JOANNE QUINER - DISTRICT COORDINATOR; AND SHANE E. OLSON - PROGRAM COORDINATOR

NRCS STAFF: JAMES SCHWAB - DISTRICT CONSERVATIONIST AND MARK LARSON - TECHNICIAN

TWO RIVERS WATERSHED DISTRICT: DAN MONEY, ADMINISTRATOR AND MATT THOMPSON, DISTRICT TECHNICIAN

TWO RIVERS WATERSHED DIST. MGRS. PRESIDENT - ROGER ANDERSON; VICE PRESIDENT - JON VOLD; SEC. - JIM KUKOWSKI; TREASURER - MIKE RATZLAFF; DARRELL JOHNSON, RICHARD NOVACEK AND O'NEIL LARSON

A Publication of the Kittson Soil & Water Conservation District, 410 S. 5th St., Suite 106, Hallock, MN 56728-4140, Phone 218-843-2619 or 2692 and the Two Rivers Watershed District, 410 S. 5th St., Suite 112, Hallock, MN 56728-4140, Phone 218-843-3333

Piper Finley Olson



Shane and Amy Olson of Halma are proud to announce the birth of their daughter, Piper Finley Olson, who was born at 8:56 P.M., January 17, 2011 at Sanford Health Center in Thief River Falls, MN. She weighed 6 pounds, 7.7 ounces and is 19 inches long. Her proud sister is Keely Olson and proud grandparents are

Billy and Margie Olson of Lake Bronson; Wendy Hunter of Moorhead and Ken Karsky of Camp Verde, AZ. Proud great-grandmothers are Judy Hornaman and Georgi Karsky, both of Aberdeen, SD; and step-great grandmother Viva Hunter of Hallock, MN.

Open House

By Shane Olson

Stop by the Kittson SWCD office on February 10th starting at 1 P.M. for our annual open house. At this time you can discuss all the programs offered by Kittson SWCD and you can order trees for 2011. Also you can sign up to have a chance to win a potted evergreen tree.

Wildlife Habitat Incentives Program (WHIP)

By Jim Schwab

The wildlife habitat incentives program (WHIP) is a voluntary program for people who want to develop or improve wildlife habitat on their land. It provides both technical assistance and cost sharing to help establish and improve fish and wildlife habitat.

This is how WHIP works, Landowners agree to prepare and implement a wildlife habitat development plan. The USDA - Natural Resources Conservation Service (NRCS) provides technical and financial assistance for the establishment of the practices. Payments are only to cost-share on the practice establishment. WHIP does not provide rental income or easement purchase payments. Federal cost-share will reimburse up to 75% of the costs. Almost any type of land is eligible. Grassland, woodland, pastureland, wetlands, streams and agricultural or non-agricultural land. Lands not eligible are lands that are currently under some other state or federal program. Please contact your local NRCS office for more information.

Side Water Inlets

By Mark Larson

For those of you with erosion problems along big road ditches or drainage ditches, check out what Side Water Inlets with 90% cost share can do for you....for questions on any of these practices call your local FSA, or NRCS.

Crop Improvement Day Winners

By Shane Olson

Congratulations to the winners who stopped by our annual education booth at Crop Improvement Day and signed up for potted evergreen trees. Winners were as follows: Dave Hemmes, Neil Wiese, Mark Wiese, Dean Johnson and Joel Dunn. We will contact you folks in May when the trees arrive to pick them.

Conservation Stewardship Program (CSP)

By Jim Schwab

The Conservation Stewardship Program (CSP) is a voluntary conservation program that encourages producers to address resource concerns in a comprehensive manner by undertaking additional conservation activities; and improving, maintaining, and managing existing conservation activities. CSP is available on all private agricultural lands and non-industrial private forest land. The program provides equitable access to all producers, regardless of operation size, crops produced, or geographic location.

Through CSP, NRCS will provide financial and technical assistance to eligible producers to conserve and enhance soil, water, air, and related natural resources on their land. Eligible lands include cropland, grassland, prairie land, improved pastureland, rangeland, nonindustrial private forest lands, agricultural land under the jurisdiction of an Indian tribe, and other private agricultural land (including cropped woodland, marshes, and agricultural land used for the production of livestock) on which resource concerns related to agricultural production could be addressed. Participation in the program is voluntary.

CSP encourages land stewards to improve their conservation performance by installing and adopting additional activities, and improving, maintaining, and managing existing activities on agricultural land and nonindustrial private forest land. The NRCS will make CSP available nationwide on a continuous application basis. Please contact the NRCS office at 218-843-2619 ext. 3.

Environmental Quality Incentives (EQIP)

By Jim Schwab

The Environmental Quality Incentives Program (EQIP) is a voluntary conservation program from the USDA Natural Resources Conservation Service. It supports production agriculture and environmental quality as compatible goals. Through EQIP, land owners/operators may receive financial and technical help with structural and management conservation practices on agricultural land. EQIP provides technical assistance, cost share payments, and incentive payments to assist crop, livestock, and other agricultural producers with environmental and conservation improvements to their operations.

Please contact the NRCS office at 218-843-2619 ext. 3.

Funding Available For Abandoned Or Unused Well Sealing

by Shane Olson

Cost-share money is available through the Kittson Soil and Water Conservation District (SWCD) for the sealing of abandoned or unused wells.

The Kittson SWCD reimburses landowners up to 75 percent of the cost of sealing abandoned or unused wells. This cost-share program is offered through the Kittson County Comprehensive Local Water Plan and state cost-share funds. Cost-share is available on a first-come-first-served basis.

Unused, abandoned or improperly sealed wells are potential sources of contamination to ground water, and can consequently affect nearby drinking water wells. Abandoned wells can act as channels for surface pollutants to enter ground water. Many abandoned wells also go uncovered, posing a physical threat to humans - mainly small children who could potentially fall into the open wells.

For more information on well sealing, stop by our office in the Kittson County Courthouse or call 218-843-2619, ext. 3.

AgBMP Loan Program

by Shane Olson

The Agricultural Best Management Practice (AgBMP) loans are available from the Kittson SWCD. The interest rate for AgBMP loans is 3%. The money is available for the purchase of Ag waste management equipment, conservation tillage equipment, septic systems, and a few other conservation related items.

Landowners in Kittson County can apply for loans by initially visiting the Kittson SWCD office to fill out an application. The application will then be reviewed by the SWCD Board of Supervisors during its monthly board meeting. Upon approval the application is delivered to Farm Credit Services or American Federal Bank in Hallock, who is also a qualified lender.

Saline Soils CCRP Practice

By Mark Larson

Kittson County has the highest number of acres of saline soils in the state of Minnesota. The main reason is the high water table within soils with high sodium content. As the water table rises it carries soluble salts to the surface or just below the surface. As the water table drops and as evaporation and transpiration by plants occur the salts remain at the surface and in the root zone of the soils. Therefore you will have poor to zero plant growth.

The United States Department of Agriculture (USDA) continuously takes applications for these areas with high saline soils for enrollment into the Continuous Conservation Reserve Program (CCRP). To be eligible the area must have been cropped 4 out of 6 years between 2002 and 2007 and must be considered saline. The Natural Resource Conservation Service will do the salinity testing to determine if the area is considered saline. Once enrolled, the acres designated will be seeded to a mix of salt tolerant grasses. The maximum acreage enrolled is 50 acres per tract. Rental rates depend upon the soil types, and participants will receive the Practice Incentive Payment (PIP) where producers may receive up to 90% reimbursement of the eligible cost incurred in practice establishment. Any landowner or operators interested in this program please call the NRCS office in Hallock (218-843-2619 ext 3) for all the details.

Wetlands

By Shane Olson

Just a reminder to anyone who wants to do projects such as roads or ponds in wetlands, swamps etc...stop by the office and request a permit application. The Enforcement Division of the Minnesota Department of Natural Resources is actively spotting violations in wetland areas by aerial flights and just this past year sent out violations to 3 landowners in Kittson County with wetland violations on their property. Also in the past, DNR's TIP line now takes phoned in reports of suspected wetland violations.

Here is a link for wetland permit regulations - <http://www.bwsr.state.mn.us/wetlands/regulation.html>

Also anyone, planning on wetland projects, I highly advise hiring a wetland consultant to come up with a plan for you prior to submitting a permit application. Once a wetland permit application is received by me, once deemed complete; the application must be forwarded on to the Board of Water and Soil Resources and the US Army Corps of Engineers for a 60 day review period. During this time a technical evaluation panel review will be held to review the site if there, is concerns with the application.



Here is an example of a reported wetland violation by the MN DNR Enforcement Division.

2011 Envirothon To Be Held At Lake Bronson State Park

By Shane Olson

The 2011 Northwest Area I Envirothon will take place at Lake Bronson State Park on April 27th. Teams of 4 to 5 students in 9th-12th grades from Kittson, Roseau, Marshall and Pennington counties will compete in six different learning stations - soils, aquatics, wildlife, forestry, and this year's current events topic, which is Salt and Freshwater estuaries. Also an oral presentation problem will be addressed by each team on a Salt and freshwater estuary problem. The current events problem is chosen nationally. The top 3 teams from the Area I Envirothon will have a chance to move to compete at Spirit Mountain in Duluth, MN in May. Winning teams their will have a chance to move on and compete at the Canon Envirothon in New Brunswick, Canada held sometime in the summer of 2011. Good luck to area teams and a huge thanks to businesses and organizations who will donate to this great event. If you are an individual who would like to donate or an area business our organization who would like to donate funds for the event please contact Shane Olson at 218-843-269 ext. 3.

Two Rivers Watershed District News

In Roseau, Kittson & Marshall Counties

Winter 2011



410 5th St. S., Suite 112, Hallock, MN 56728 • Phone 218-843-3333 • Fax 218-843-2020 • Email: daniel.money@mn.nacdnet.net

THE TMDLs ARE COMING!

By Dan Money

The Two Rivers Watershed District has been approached by the Minnesota Pollution Control Agency to begin a watershed study on an unnamed coulee within the TRWD, to be combined with studies on the Joe River (JRWD) and the Tamarac River (MSTWD). These areas are the two shown in light green, located in extreme northwest part of the state, and labeled "Tamarac R" on the map below.

This is a part of the state's impaired waters process, and the MPCA proposes that a 4 year study period be led by the local agencies. They anticipate awarding a grant to the local agencies to the work of implementation of this planning and data collection process. The District will be working with the Joe River Watershed District, Middle Snake Tamarac River Watershed District, and Kittson and Marshall County Soil & Water Conservation Districts and Comprehensive Local Water Planners on the project.

The MPCA has suggested that a watershed approach be used, which is a 10-year rotation for addressing waters of the state on the level of Minnesota's major watersheds. Since 2007, the MPCA and

its partners have begun implementing this approach, as recommended by the Minnesota Clean Water Council and directed by the Minnesota Legislature.

Intensive Watershed Monitoring

Watershed approach steps

The steps of the watershed approach are as follows:

Step 1 — Monitor and gather data and information:

MPCA employs an intensive watershed monitoring schedule that will provide comprehensive assessments of all of the major watersheds on a ten-year cycle. This schedule provides intensive monitoring of streams and lakes within each major watershed to determine overall health of the water resources, to identify impaired waters, and to identify those waters in need of additional protection to prevent future impairments. This has been completed for the proposed study area.

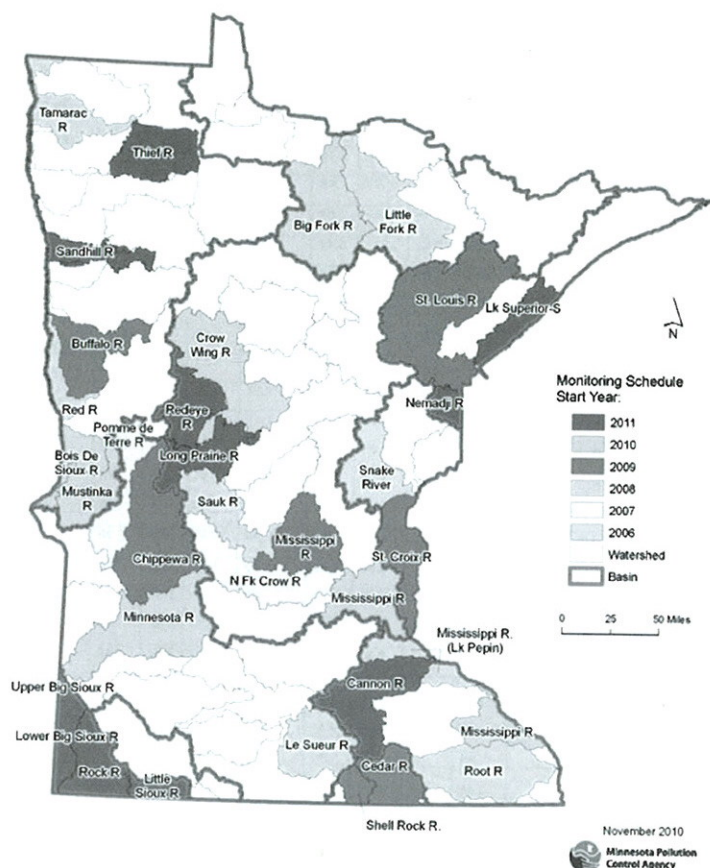
Step 2 — Assess the data: Based on results of intensive watershed monitoring in step one, MPCA staff and its partners conduct a rigorous process to determine whether or not water resources meet water quality standards and designated uses. Waters that do not meet water quality standards are listed as impaired waters.

Step 3 — Establish implementation strategies to meet standards: Based on the watershed assessment, a Total Maximum Daily Load study and/or protection strategy is completed. Existing local water plans and water body studies are incorporated into the planning process.

Step 4 — Implement water quality activities: Included in this step are all traditional permitting activities*, in addition to programs and actions directed at nonpoint sources. Partnerships with state agencies and various local units of government, including watershed districts, municipalities, and soil and water conservation districts, will be necessary to implement these water quality activities.

*MPCA will continue routine regulation during all steps of the watershed approach process, as appropriate.

The 4 year study and planning phase will be getting underway in 2011, and will be led locally by the agencies named above. As a part of the process, public information meetings will be periodically held. For more information please contact the Two Rivers Watershed District.



Two Rivers Watershed District News

In Roseau, Kittson & Marshall Counties



BWSR Drainage Records Modernization Grant

The Two Rivers Watershed District was recently awarded a grant from the Minnesota Board of Water & Soil Resources in the amount of \$7,483 to do drainage records modernization. A prior grant for \$3,317 was used to scan records that were on file at the Minnesota Historical Society.

Most legal ditches in the watershed district were organized and constructed in the very early 1900s. Every legal ditch has numerous legal documents in a "ditch file" that is generally kept at the county courthouse or with the watershed district. These documents include the original surveys, engineers reports, viewers reports, benefitted area maps, drainage area maps, court proceedings, and any other documentation associated with the ditch. Some of this important information is over 100 years old, and the paper copies it is stored on are beginning to show their age.

Therefore, drainage records modernization is the process to scan all of this aging documentation and ditch history into digital files, which will preserve the information and make it more readily available to the public users of the ditch and to the ditch authorities. This latest grant will be used to map ditch locations into a geographic information system (GIS), refine drainage areas, and map out the ditch right of ways using GIS. The work done under this grant must be completed within a 2 year period.

New Organization Aims To Develop Flood Retention Projects

A newly formed organization hopes to provide The Red River Valley with additional retention projects that will keep the region protected from disastrous flooding.

Created in the fall of 2010, the Red River Retention Authority combines the levying power of both the Red River Watershed Management Board in Minnesota and the Red River Joint Water Resource District in North Dakota. The new organization will continue working to combat flooding by securing additional federal funding for water retention projects benefiting all citizens of the Red River Valley.

"This joint powers agreement is a major step in funding water retention projects in both Minnesota and North Dakota," says John Finney, President of the Red River Watershed Management Board in Minnesota. North Dakota state Senator, Cass County Joint Water Resource District Chair, and Red River Joint Water Resource District Basin Coordinator Tom Fischer agrees, "This partnership is about water retention efforts, and by working together we can significantly reduce flooding up and down the Red River Valley."

The goal of the newly-created Red River Retention Authority is to initiate appropriate protection measures, facilitate those measures, and to assist local water boards with regulatory and permitting obstacles so they can implement effective water retention projects for the benefit of the entire Red River basin. The RRRRA will focus on funding and executing tangible water retention projects.

The joint powers agreement between the two Joint Boards, which pools resources from both flood protection entities, marks an important milestone in the continued flood fight. Terms of the agreement dictate that each organization will retain tax levy authority, but the two Joint Boards will coordinate their retention efforts to create a more cohesive and basin-wide approach to retention in the Valley.

Kittson SWCD Rain Monitoring Program

By Darren Carlson

The Kittson SWCD operates a Rainfall Monitoring Program throughout Kittson County. Rain gauges are read and recorded daily. At the end of each month records are submitted to the SWCD. The Kittson SWCD submits data on the Minnesota State Climatology Office website. The Kittson SWCD has over 35 years of rainfall data for Kittson County.

Why do the monitoring? With the heavy rains in 2010, the data collection has proved to be very valuable on a local level. Farm Service Agency (FSA) used this documentation, which sent it to their state and national headquarters to allow permission for landowners to emergency hay their CRP acres. Kittson County was the only county in 2010 in the United States allowed to do this. Also FEMA (Federal Emergency Management Agency) dollars were obtained by Kittson County and certain Townships. By using the rain data to document abnormal heavy rain events, dollars were obtained from FEMA and were used primarily for road and bridge repair work. Thanks to the rain gauge monitors, these dollars were more readily available thanks to the great monitoring and documentation.

What is the average Kittson County Rainfall for a year? The average rainfall for Kittson County is between 19 and 20 inches. For 2010 the County average will greater than 27 inches (December has not been entered as of yet). The wettest month was May which the county average was 7.63 inches.

Thank you and looking for volunteers. The Kittson SWCD would like to say "Thank You" to the 24 rain gauge monitors for their work in 2010. Our goal is to have one monitor for each Township in Kittson County. We are looking for volunteers from South Red River, Pelan, McKinley, Cannon, Peatland and Klondike Townships. We provide the forms and a rain gauge. If you are interested please stop by the office or call 843-2619 Ext. 3 for further information.

Township & Section	April	May	June	July	August	Sept.	Oct.	Nov.	Total
Percy 31 - R.B.	NR	6.82	NR	NR	NR	NR	NR	NR	6.82
Spring Brook 25 - J. D.	1.26	6.20	3.16	3.47	1.26	5.71	2.25	NR	23.31
Hill 5 - B. D.	2.66	6.94	3.09	4.83	2.69	4.88	3.19	0.90	29.18
Poppleton 9 - M. L.	1.43	8.08	4.10	5.80	0.75	5.13	1.97	0.32	27.58
Thompson 35 - P. G.	1.24	7.43	3.58	3.46	1.61	5.26	1.78	0.63	24.99
Svea 25 - G. G.	1.55	6.05	4.70	NR	NR	NR	NR	NR	12.30
St Vincent 2 - A. H.	1.68	11.44	3.64	2.67	2.46	3.93	2.46	NR	28.28
Percy 14 - A. J.	NR	7.83	3.27	5.44	1.30	5.84	2.24	NR	25.92
Teien 28 - T. D.	1.16	7.09	3.83	3.47	0.67	4.86	2.11	NR	23.19
Granville 13 - B. L.	1.76	10.45	6.18	6.58	1.65	5.35	2.17	1.01	35.15
North Red River 9 - B. Li.	1.62	6.58	3.92	7.02	1.94	5.40	2.53	0.38	29.39
Thompson 12 - Markit	1.16	5.31	7.32	3.89	1.50	5.51	1.72	NR	26.41
Tegner 31 - G. M.	1.56	6.03	5.66	2.93	1.12	4.80	2.04	0.07	24.21
Teien 12 - C. M.	1.44	6.40	5.12	3.29	1.62	4.88	NR	NR	22.75
Hampden 13 - CW. N.	1.49	8.40	4.03	7.67	1.48	4.49	1.78	0.79	30.13
Norway 21 - D. O.	0.10	7.37	3.32	4.57	0.78	5.94	2.04	NR	24.12
Jupiter 18 - R. P.	1.63	7.05	3.99	4.21	1.18	5.58	NR	NR	23.64
Richardville 10 - J. P.	1.52	8.28	6.41	5.30	2.00	4.55	1.98	0.90	30.94
Skane 5 - M. S.	1.45	7.40	4.46	2.84	1.26	5.14	2.13	NR	24.68
Deerwood 3 - W. V.	1.16	6.70	4.48	4.75	1.51	5.39	2.39	1.02	27.40
St. Vincent 24 - N. W.	1.77	8.86	3.56	4.74	2.08	4.78	2.45	NR	28.24
St. Joseph 4 - J. W.	1.60	10.77	8.17	3.98	2.34	5.29	2.32	NR	34.47
Hallock 13 - TRW	1.16	8.12	3.79	4.04	1.73	4.70	1.88	0.51	25.93
Deerwood 13 - R. A.	NR	NR	3.40	6.34	1.27	NR	NR	NR	11.01
Caribou 33 - L. O.	NR	NR	NR	1.30	0.35	3.34	NR	NR	4.99
Avg Rainfall Monitors	1.45	7.63	4.49	4.46	1.50	5.03	2.18	0.65	26.75

NR = No Report for this month submitted

Received Rain Gauge on 7/22/2010

** Received Rain Gauge on 6/9/2010**



Kittson SWCD Tree Order Form 2011

Name:

Address:

City:

State:

Zip:

Home Phone:

Cell Phone:

County:

E-Mail Address:

All bundles contain 25 bareroot trees or shrubs except where noted!

Species	Approximate Size of tree stock	Price Per 25 Trees	Number Needed ex. 25, 50, etc.	Total Amount
CONIFERS				
Black Hills Spruce	8" - 15"	\$31.25		
Colorado Spruce	8" - 15"	\$31.25		
Scotch Pine	8" - 14"	\$31.25		
POTTED—1 GALLON	Approximate Size of tree stock	COST/POT	Number Needed ex. 25, 50, etc.	Total Amount
Black Hills Spruce	15" - 18"	\$6.50		
Colorado Spruce	15" - 18"	\$6.50		
DECIDUOUS				
Ash, Green	18" - 24"	\$25.00		
Basswood (Am Linden)	18" - 24"	\$43.75		
Boxelder	18" - 24"	\$25.00		
Chokecherry, Common	18" - 24"	\$25.00		
Chokecherry, Schubert	2' - 3'	\$25.00		
Cottonwood, Siouxland	2' - 3'	\$25.00		
Crab, Red Splendor	18" - 24"	\$25.00		
Maple, Silver	2' - 3'	\$25.00		
Oak, Bur	18" - 24"	\$25.00		
Paper Birch	18" - 24"	\$25.00		
Poplar, Norway	18" - 24"	\$25.00		
Poplar, Rovedeau	18" - 24"	\$25.00		
Plum, American	18" - 24"	\$25.00		
Siberian Elm	18" - 24"	\$25.00		
Requests for other Tree Varieties?				

Species	Approximate Size of tree stock	Price Per 25 Trees	Number Needed ex. 25, 50, etc.	Total Amount
SHRUBS				
Cotoneaster	18" - 24"	\$25.00		
Cranberry	18" - 24"	\$31.25		
Dogwood, Redosier	18" - 24"	\$25.00		
Flame, Willow	18" - 24"	\$25.00		
Juneberry	18" - 24"	\$31.25		
Lilac, Common Purple	18" - 24"	\$25.00		
Requests for other Shrub Varieties?				
MISC ITEMS				
2 1/2 Feet Flags	Bundle of 100	\$12.50		
4 foot Tree Pro Protector	Individual	\$2.75		
3 foot Tree Pro Protector	Individual	\$2.00		
3 X 3 Fabric Tree Mats	Individual	\$1.50		
		Cost		\$
		Sales Tax 6.875%		\$

Make Checks Payable to Kittson SWCD	TOTAL		\$
50% DOWN PAYMENT AT ORDER OR PAYMENT IN FULL IS APPRECIATED		CURRENT PAYMENT IF NOT PAID IN FULL	\$

The Kittson SWCD has a tree planter to rent for the upcoming tree planting season. Cost is 25 cents per tree planted if the driver of the tractor is provided or 50 cents per tree if the SWCD staff has to drive. A minimum fee of \$50.00 for all tree plantings. The Kittson SWCD will only plant properly prepared sites that are ready the first week of May. If you have questions regarding the preparation of your site or about the tree program, please contact Shane Olson at the Kittson SWCD. Phone number is 218-843-2619 Ext. 3.

Orders cannot be cancelled after February 28, 2011.

Ask us about other programs the Kittson SWCD offers!



Orders are accepted on a first-come, first-served basis.

Tree orders will be available for pickup beginning of May 2011.

Letters/phone calls will be made as soon as we know when the trees will be here.

PLEASE RETURN ORDER FORM AND FULL PAYMENT TO:

**Tree Program
Kittson SWCD
410 South 5th Street
Suite 106
Hallock MN 56728**

Kittson SWCD Equipment Rental Program

By Darren Carlson

The Kittson Soil and Water Conservation District (SWCD) will have a 12 foot Brillion "Sure Stand" Seeder available to rent for crop year 2011. **What is a Brillion Seeder?** The Brillion seeder is a broadcast seeder with a front roller and a rear



roller. Front rollers crush lumps, press down small stones and form a firm seedbed. Precision seeding devices meter out the seed onto the well prepared seedbed. The rear rollers split the shallow ridges formed by the front rollers and gently firm the soil around the tiny seeds. The S-tine track removal kit minimizes compaction from the tractor tires before the rollers prepare a uniform seedbed. All seed are planted at fingernail depth for maximum germination potential and fast emergence (ideal for native grasses establishment).

Why use the Brillion Seeder? This seeder was purchased in December 2010 and will be available for the 2011 spring planting season. This Brillion seeder will plant CRP seed plans such as native grasses and cool season grasses or plant commodity crops such as canola and hay crops into a clean tilled seed bed. The drill has two separate seed boxes that allow multiple seed types at varying rates. The front box is legume box used for smaller heavy seeds (switchgrass, alfalfa, canola, etc.). The rear box has a cage agitator that rotates when seeding and is used for fluffy seeds such as Big Bluestem, Indiangrass, Little Bluestem and oats.



What is the rental rate? Rent is \$10 per acre, plus a \$75 setup fee, which includes delivery and pickup. The planting width of the drill is 12 feet and the overall width of the drill is 15 feet. A tractor with at least 45 horsepower and two hydraulic rear-couplers is required to pull the drill. Stop by the Kittson SWCD to fill out a rental agreement or call (218) 843-2619 Ext. 3 for more details.

Address Corrections Very Important

After several years with a new address, we are still receiving mail addressed to our old post office box address. The Kittson SWCD and the Two Rivers Watershed District have converted from post office box addresses to physical addresses in the Courthouse. The Kittson Soil & Water Conservation District's new address is 410 S. 5th St, Suite 106, Hallock,

MN, 56728-4140. The Two Rivers Watershed District's new address is 410 S. 5th St, Suite 112, Hallock, MN, 56728-4140. If you have a new address to provide us contact: Shane.olson@mn.nacdnet.net.

We will share it with the Farm Service Agency office, if you request to do so.

**Kittson County
SWCD**

410 So. 5th St., Suite 106
Hallock, Minnesota 56728-4140
218-843-2619

Address Service Requested
Printed on Recycled Paper

*Services may be obtained without regard to
race, color, religion, sex, national origin,
age, marital status or handicap.*



Nonprofit Organ.
U.S. POSTAGE
PAID
PERMIT NO. 85
Hallock, MN 56728
CAR-RT SORT

Kittson SWCD Website

Check us out at: www.nwmnswcd.org

Check us out! We are on the Web!

The Kittson Soil and Water Conservation District (SWCD) has created a website in cooperation with fifteen other northwest Minnesota Soil and Water Conservation Districts. The website is regularly updated with new information and photos added monthly.

Check it out!

